

TOFT VILLAGE CALENDAR

MAY 2026



EDITORIAL

This month we publish a **Guest Editorial** from a Toft resident. If you wish to contribute an **Editorial** in a future issue, please email calendareditor@toft.org.uk

Toft is a special place. Of course it is – we all know that. But did you know that we're the envy of neighbouring villagers, who observe everything that's on offer here and wonder what makes our village so special?

Think about what goes on. Do you meet friends in the bar or in the Schoolroom Café, go to film nights, enjoy music gigs, savour the annual Big Breakfast? Have you laughed (and possibly cried) at the reviews and videos created for our entertainment? Did you view with awe those amazing displays presenting the history of the village and its people and the talents of people living here today? And all within easy walking distance ...

How is it that Toft can so ably manage all that goes on here? There are 'services' too: the driving scheme that helps generally vulnerable people get to their medical appointments; management of Lot Meadow and of the churchyard; monitoring of water quality in Bourn Brook; production and distribution of this monthly Calendar and a myriad other acts generously and quietly performed.

The answer is that not one of these would happen without willing and able volunteers. Very few of these tasks require training and if they do, that's provided at no personal cost. Some jobs are taken on by people who already have the specialist skills needed – accountancy, for example – but most simply need feet on the ground and a willingness to contribute. Whether you're looking to meet new people, enjoy some extra physical exercise or simply to help with organising an event, Toft welcomes you!

According to the UK government, ideally there are five core principles within any community: 'Connection, Collaboration, Communication, Commitment and Contribution – these are the building blocks for creating resilient and engaged communities'. By this definition, Toft is most certainly an 'engaged community' – one very largely dependent on its volunteers.

What are the advantages of being a volunteer? You make new friends, learn about the lives of others (whose life experience may be very different from your own) and come away knowing a job's well done. It can give you a whole new purpose and along the way, you may learn new skills yourself. What's not to like?

There's always a demand for volunteers, always too much to be done and too few to help. If you can offer only an hour a week, that's enough – every contribution is valued. So next time someone asks if you have the time...will you say 'Yes!'?

DIARY DATES

The Parish Council
Monday 11th May,
7.00pm in The
People's Hall. All
welcome.

**Toft
Friendship Club**
[Over 50s Club]
A Trip down the Nile
Dr David Jayne
13th May 2.30pm at
Toft People's Hall,
visitors welcome.

Toft Choir
Choral Evensong
Sunday 10th May
6pm at St Andrew's

Toft Club
Race Night on
Saturday 16th May at
The People's Hall

Toft Big Breakfast
Toft People's Hall
Sunday 17th May
from 9.00am - noon



Volunteers in the kitchen serving cream teas

THE CHURCH IN TOFT

St Andrew's Parish Church This church extends a warm ecumenical welcome to all.

Assistant Curate	Revd Barnabas Leeke 07787 800 888
Lay Minister	Mrs Barbara Preece 263466
Churchwardens	Mrs Ann Mitchell 262516 Mrs Elizabeth Dolman 262574
Deputy Wardens	Jean Verney 263028

SERVICES OF WORSHIP

3rd May

8.30am Holy Communion (BCP)
Revd Prof. Michael Reiss
3.00pm Spring Feast Service followed by tea
Barbara Preece & Cathy Michell

10th May

6.00pm Evensong with Toft choir
Revd Barnabas Leeke

14th May ASCENSION DAY at Harlton

7.00pm Team Service
Revd Clare Coats & Revd Barnabas Leeke

17th May

11.00am Morning Worship
Revd Robert Dolman

24th May

11.00am Holy Communion
Revd Clare Coates & Charlotte Kalinsky

31st May

8.30am Holy Communion (BCP)
Revd Prof. Michael Reiss
10.30am **Lordsbridge Team Service – Great Eversden**
Holy Communion – Revd Clare Coates & Revd Claire Robertson

Wednesday morning prayer is discontinued, for the time being anyway.

On Wednesday evenings at 8.00pm, via Zoom, a service of compline: ID: 899 215 191 or follow the link: <https://us02web.zoom.us/j/899215191>
Zoom services available at 11.00am on Sundays.

MEETING ID: 823 1147 36

Sung Evensong on 10th May led by Revd Barnabas Leeke, Janet Tanburn and the Toft Choir. This is very special as we have not celebrated Evensong for a number of years and the music is beautiful – do come.

Evensong

When I was a child, I regularly attended evensong on Sunday evenings with my mother. On the way home, there was always an aura of peace and calm about my mother that I loved. Living in a beautiful place like Toft, we know, if we give ourselves time to notice it, that evening brings a natural time of calm. Evensong can clothe this in words and music.

In medieval monasteries the evening services were Vespers (around 6 pm) and Compline (around 9 pm). By the 16th century, in the parish churches vespers and compline were performed together in one service and old English speakers translated the Latin word 'vesperas' as 'æfensang', which became 'evensong' in modern English.

Evensong was initially sung entirely in plainchant, but now there is a wealth of choral music for evensong settings from the 16th century to the present day. Choral evensong is still sung most days in our cathedrals and here in Cambridge, King's College and St John's College have choral evensong most days.

Toft Choir Choral Evensong Sunday 10th May at 6pm



This year, Toft choir invites you to join choral evensong in our church in Toft.

We hope you will join us.

Janet Tanburn

Obituaries



ELIZABETH HARRISSON 1941 – 2026

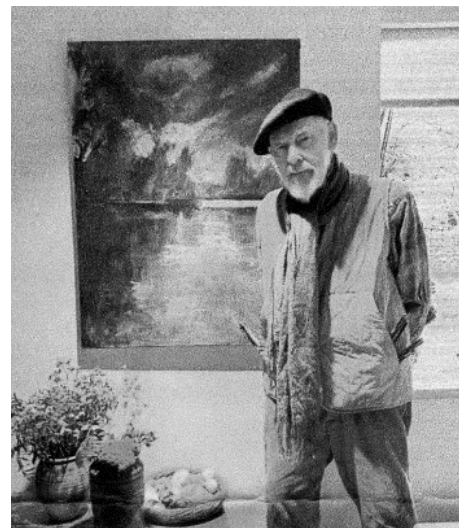
Elizabeth was the eldest of five children, born before her father went to war, so much older than her siblings. Brought up and educated in London, she went to the University of Hull to read Latin. Always reading her whole life, she worked in libraries before and after Hull, coming to the University Library in Cambridge in 1968 and moving to Toft in the early seventies, where she remained in Powell Close until her death.

Elizabeth spent 38 years at the University Library, retiring in September 2006. She did work on *The Cambridge Bibliography of English Literature* – she liked to correct things. She worked in the Rare Books Department and ended up in charge of the Preservation Microfilming Unit, having been Director of the Mellon Microfilming Project. The internet is full of academics and others thanking her for her expertise and help.

Away from work, Elizabeth took an active role in the village, helping to run the Cub pack, as a member of St Andrew's Church, the Friendship Club, the Warm Hub, The Trefoil Guild and the Social Club, enjoying Food on Friday and the Quiz particularly – she had

a phenomenal general knowledge. She had a deep appreciation of high culture (classical music – she loved to sing) and the ballet, about which she was an absolute expert, visiting the Royal Opera House two or three times a year. She loved holidays, travelling extensively with her friend Rita Bates, going to the Met in New York, visiting Vienna and so on, visiting family in Australia and this country. She had a deep and detailed knowledge of tennis, watching avidly on TV and at Wimbledon in her youth. A walker, a swimmer, a lover of good food and wine and extremely generous.

Her reading covered many different genres, particularly schoolgirls' fiction, of which she had a large collection. She recorded everything she did and her thoughts and reactions. In her older age, a whole succession of medical issues curtailed her movement, left her in great pain and finally prevented her from doing all she held dear.



COLEN LUMLEY 1932 - 1926

Colen will be remembered in the Historical Society for co-ordinating the Toft Big Dig during 2013/2014, gathering local historical information and of course his painting, but more of that next month.

Friendship CLUB

13th May A Trip down the Nile Dr David Jayne 2.30pm at Toft People's Hall, visitors welcome.

The Friendship club is for over 50s. We meet every month on the 2nd Wednesday at 2.30pm at Toft People's Hall, programme followed by tea and biscuits. **All welcome**



TOFT PARISH COUNCIL

Who is on the Council?

The Parish Council is comprised of a Chair and Deputy Chair and five other councillors, all of whom are volunteers. Currently these members are:

	Phone	E-mail
Chair:		
Martin Yeadon	263663	<i>cllr.yeadon@tpc.toft.org.uk</i>
Deputy:		
Elaine Miles	262255	<i>cllr.miles@tpc.toft.org.uk</i>
Avril Coghlan		<i>cllr.coghlan@tpc.toft.org.uk</i>
Emma Darbyshire	07763 463234	<i>cllr.darbyshire@tpc.toft.org.uk</i>
Giles Harrison		<i>cllr.harrison@tpc.toft.org.uk</i>
Sarah Tebbit		<i>cllr.tebbit@tpc.toft.org.uk</i>
Clerk:		
Ben Stoehr	01954 210241	<i>clerk@tpc.toft.org.uk</i>

The Parish Council represents the residents of Toft and aims to support the welfare and interests of its residents and businesses. Each council member takes responsibilities for specific areas covering Highways, Health and Safety, Footpaths, Lot Meadow, The Recreation and Playground area, The Allotments, Climate Change, The People's Hall, the Defibrillator and Welcome Packs.

The Parish Council met on 13th April, 2025. Please note that the next meeting will be on the 2nd Monday in the month due to the early May Bank holiday.

Next Meeting: Monday 11th May, 7.00pm in The People's Hall. All welcome. This meeting will be the Annual Parish Meeting at 7.00pm followed by the William Eversden Meeting (Allotments) and then the Parish Council Meeting at about 7.30pm.

There were apologies from Cllr Sarah Tebbit. There were no declarations of interest or requests for dispensations.

A member of the public enquired as to whether there had been any further news on the siting of a new streetlight opposite Stoney Lane but the PC is still considering this.

The Council approved the dog signs which have now been printed for the Home Meadow opposite the church, where last month there were two incidents involving dogs and sheep. Cllrs Darbyshire and Harrison are to organise the positioning of these at the three entrances.

Regarding the Methodist Chapel, Cllr Yeadon updated the PC on progress towards its acquisition as follows:

The six-month moratorium that was part of the Asset of Community Value designation has now passed. The Methodist Church still has not given any indication of how much they would want for the building.

On 9th April a village meeting was held in the TPH. There were about 50 attendees. There were three questions that we asked the attendees, and the results were as follows:

(Y=Yes, N = No UnD = Undecided)

Do you support the community acquiring the Old Chapel? 29/45 Y, 13/45 N, 3/45 UnD

Are you prepared to make a contribution to its purchase? 23/45 Y, 15/45 N, 7/45 UnD

Would you support the PC applying for a loan to support the project? 31/45 Y, 9/45 N, 5/45 UnD

There was general support but two main reasons for not acquiring it were highlighted. The first was the difficulty we already have getting volunteers even for our existing voluntary activities. The second was that many felt we were being naive to believe that the building could be purchased for the figure we have in mind. Both very valid concerns. A working party meeting has been held and it was agreed to wait until we hear of the Methodist Church's next moves before deciding whether to proceed. The Parish Council approved that approach.

The PC discussed the suggestion of having 20 and 30 mph signs on bins. It was felt that residents who wish to support this initiative can do so, but that it would not be a cost-effective purchase for the PC.

Regarding the dog fouling in Church Road, a sign has been placed asking dog walkers to pick up after their dog(s) and the situation is being monitored.

Cllr Darbyshire is sourcing a header photograph for the new website and is to contact residents who have local photographs and will circulate these to PC colleagues before a final decision is made.

Correspondence received from residents included notification from the Speed Watch Co-ordinator that plans have been finalised with the police for the new speed watch group and he has submitted a request for the purchase of a speed watch gun device, which the PC approved.

Another report came from a resident complaining again about cars racing around the village and double parking in Church Road. The number plates of the cars have been photographed and the PC will pass these on to the police.

A further report about dog fouling has been received and a dog running off lead along streets and being allowed to enter gardens and foul private property. This is a legal offence and can incur a fine of between £75 and £100, rising to £1,000 if unpaid. Further verbal reports have been received regarding dogs which are not under the control of their owners in a public place or insufficiently secured in a garden. This is an offence and could lead to prosecution.

The PC is to write to known dog owners whose dogs have been seen fouling and/or to be out of control before these incidents escalate any further.

The Council would encourage residents to report infringements to the relevant authorities.

The finance report was approved.

An offer of volunteer support has been received from Stratagem IPM Ltd, who have their offices at Meridian Court on the corner of Comberton Road and Church Road. We are very grateful for their offer to become involved once again in providing support to the village. The PC has approved the purchase of more bark for the children's playground and this work will be carried out by these volunteers.

Regarding Members' items, Cllr Coghlan reported that she had received complaints regarding cyclists being scratched by brambles when cycling along the cycle path between Toft and Comberton. It was noted that this matter has been reported to Highways on many occasions but to no avail.

Cllr Darbyshire reported that she has submitted the request for a 20mph speed limit throughout the village and we now await a response, which will be issued in October.

It was noted that EWR is to hold a final round of consultations and these will be advertised and more information can be found on their website: <https://eastwestrail.co.uk/consultation/consultation2026>

FINAL EAST WEST RAIL CONSULTATION

The final consultation for the East West Railway has opened. It closes on 9th June. The proposals, a list of face-to-face consultation events and the way in which to give feedback are all accessible from here: <https://eastwestrail.co.uk/consultation/consultation2026>

How to take part in this consultation east west rail Consultation 2026

Come along to an event near you:

- Thursday 23 April, 2pm-7pm**
The Stuart Memorial Village Hall, Church Street, Templeford, SG19 2AW
- Friday 1 May, 2pm-7pm**
Shelton Rugby Club, The Dovey Field, Cambridge Road, Great Shelford, CB22 5JJ
- Thursday 21 May, 11am-6pm**
Cambridge United Football Club, Cledara Abbey Stadium, Newmarket Road, Cambridge, CB5 8LN
- Saturday 30 May, 11am-6pm**
Cambridge Belfry Hotel and Spa, Book Lane, Cambourne, CB23 6BW

Scan the code or visit our website to view proposals and share your feedback.

Materials will be made available in alternative formats on request. If you or anyone else you know would prefer a different format or language, please let us know by emailing contact@eastwestrail.co.uk or calling 0330 134 0007.

eastwestrail.co.uk Follow us

THE FUTURE OF THE TOFT METHODIST CHAPEL BUILDING



Summary report of a public meeting at Toft People's Hall, 9th April 2026

Martin Yeadon, Chair of Toft Parish Council, gave the following report:

No decisions have been made regarding the community acquiring the building. We do not know the cost or the date of any sale.

Letters have been sent to the Church hierarchy proposing that they donate the building to the community. However, the Methodist Church is bound by Charity Law, which determines that the building be sold at the market rate.

A request to keep the building open for community use was rejected.

Toft Parish Council (TPC) requested that the building be deemed an Asset of Community Value (ACV) and ACV status was granted. This meant that the building could not be sold for six months unless to the community.

There are examples where a church has been sold

to the community. However, the building may be auctioned off, in which event it is unlikely that we could respond quickly enough.

A TPC working group has been set up to consider the acquisition.

Before its closure, the chapel was used by many village organisations, most of which have relocated to the People's Hall, which cannot provide storage space.

The future

The building would need volunteers to run it. Furthermore, the building's condition means investment would be needed over the years.

Three arrangements for managing the building came into consideration.

1) Link it to the People's Hall Committee, 2) Create a similar but separate committee, 3) Make it primarily a guiding and scouting centre.

Toft People's Hall Committee is unable to take on the building. The Guiding organisation would not wish to buy the building but may offer a possible solution in managing it as a community facility.

Funding

We are exploring grant opportunities; however, no source of funding for a purchase (as opposed to improvements) has been identified. We would therefore need to ask residents, companies or local benefactors to support us. If TPC took out a works loan for £100,000, it would cost £7,600 a year over 25 years (i.e. circa £25 per household per year).

TOFT SPRING FEAST 2026

Programme

Friday 1st May

Toft People's Hall

8.00pm: Two short videos: *The Toft Odyssey*, a comic romp through 2,000 years of Toft history, and *RicMar: The Wander Years* from the famous Toft Studio. Free entry, all welcome.

Saturday 2nd May

All at Toft People's Hall. Entry is free to these events.

12.00pm (outdoors, weather permitting): Maypole dancing workshop. Come along, learn the ropes and practise for Sunday. All ages welcome.

2.00pm – 5.00pm: Exhibition of photographs: *The Changing Face of Toft seen through its buildings*.

3.00pm - 4.00pm: Tea-party and presentation to Justin and Jenny for their 13 years of service to the village at Toft Shop.

4.00pm – 4.30pm: A re-showing of *The Toft Odyssey* (25-minute video – see above).

Sunday 3rd May.

This year is a little different to previous years.

12.45pm: A bring-your-own picnic lunch in Lot Meadow. Bring blankets and picnic chairs if you wish (no toilet facilities available).

1:45pm: Move to the village green for Maypole dancing at 2.00pm, followed by well-dressing, a short service and tea at St Andrew's.





Wildlife Trust for Beds, Cambs & Northants

This is not just any woodland...

Dogs and responsible owners are welcome on most of our sites and our standard advice is that dogs should be kept on a lead and prevented from entering water. Unfortunately, our staff deal with regular reports of dog bites and loose dogs causing damage and distress – as well as abuse from dog owners.

Please check our website for the rules for any site you would like to visit. **Hayley Wood has recently been made a no-dogs site.** Trumpington Meadows has limited areas where dogs can be off lead.

<https://www.wildlifebcn.org/nature-reserves/dogs-nature-reserves>



Upcoming events

- ❁ Sunday 3rd May 7-8.30am: Seasonal stroll (bird song) at Trumpington Meadows
- ❁ Wednesday 6th May 7.30-9am: Seasonal stroll (bird song) in Cambourne
- ❁ Monday 11th May 9.30am-12: Monthly meander (bird song) at Trumpington Meadows
- ❁ Wednesday 27th 11-1ish: Family walk and bring-your-own-picnic in Cambourne
- ❁ Thursday 28th May 11-1ish: Family walk and bring-your-own-picnic at Trumpington Meadows

Local enquiries

Rebecca.Neal@wildlifebcn.org
Facebook: @BeccaBadgerWTBCN
TrumpingtonMeadows@wildlifebcn.org
Facebook: @TrumpingtonMeadowsNatureReserve

General enquiries

cambridgeshire@wildlifebcn.org
[@wildlifebcn](https://www.wildlifebcn.org)
www.wildlifebcn.org

Toft Club News

It has been officially confirmed that Toft Social Club has been awarded Cambridge & District **CAMRA Club of the Year 2026!**

If you haven't been into the Club for a few weeks, why not pop in and see the new décor, which is approaching completion?

We are holding a **Race Night** on Saturday 16th May – come along and enjoy a flutter on the horses and all the fun of the racecourse. Free entry, low wagers, prizes to be won! Full details on the website. Doors open 8pm and the racing starts at 8:30pm.

The May film is on Saturday 23rd, when we are showing the 2025 release *Hamnet* starring Jessie Buckley and Paul Mescal. In 16th century England, young tutor and writer William Shakespeare meets Agnes and they fall in love. They have three children, two daughters - Susanna and Judith - and a son - Hamnet. Shakespeare's career as a playwright starts to take off but this tests his relationship with Agnes and his children. Then tragedy strikes! Doors open at 7:30pm and the film starts promptly at 8pm. Film Club membership is £12 for the year or evening membership is £3.00.

The Club has run the Film Club for 20 years, and we have bought a DVD of each film. We are now having a sort out and have nearly all of the films we have shown available. We are asking £1 each, which will go to charity. Check out the list / buy a DVD here: <https://toft.club/dvdSale>

On Friday 1st May as part of the **Spring Feast**, the Club is hosting a showing of the **Feast video** (details elsewhere in the Calendar) supported by the latest **RicMar video**. Doors open at 8pm – see the website for video showing times. Continuing the Spring Feast weekend, the Club will be open on the afternoon of Saturday 2nd May in conjunction with the exhibition and film.

The local elections are being held in the Hall on Thursday 7th May, in the main hall. The Club will be open as normal, but access will only be via the Club Room door.

Toft Art and the Games Night are taking a rest in May due to the Spring Feast and elections, but both are back in June. Our other regular events are: **Carpet Bowls** on Friday 8th, **Toft Quiz** on Thursday 14th, **Table Tennis** on Thursday 21st and **Toft Bingo** on the 28th. Our popular monthly **Open Mic / Music Night** is on Saturday 9th.

The Club is always open every Thursday and Friday evening from 8pm, plus most Saturday evenings and there is always a warm welcome where you can meet up with friends and enjoy a drink.

Keep up to date here:

Website: <https://toft.club>
Follow us on Facebook:
<https://www.facebook.com/ToftSocial>



Blink and you'll miss it

It has recently dawned on me that we are now closer to the longest day of the year than to the shortest. How can that be? Summer so soon? I'm sure there was hail last week and I'm still wearing bed socks at night. Yet England has an uncanny ability to spring glorious weather upon us without warning. It's cheeky like that. So, I've taken to writing a list of summer resolutions each year... ensuring we don't miss any of our favourite sunny activities.

Here's our family resolution list for this year:

1. Plant strawberries and raspberries
2. Go to the woods before school
3. PYO peonies
4. Build a den
5. Try canoeing
6. Swim in the sea (hopefully not as a result of the previous resolution)
7. Experiment with barbecued pizzas
8. PYO lavender
9. Slip 'n' slide in the garden
10. Eat fish and chips on the beach

I wonder what your list of summer resolutions might be? Wishing you a very merry summertime in Toft and beyond.

Elaine A. (Mum of boys and newcomer to the village)

Toft Shop

...New Ownership Announcement

We're proud to announce that we are the new owners of Toft Village Store!

We're really excited to become part of the local community and are looking forward to bringing fresh ideas, improved offerings and a great shopping experience for everyone.

REFURBISHMENT UPDATE

The shop is currently closed for refurbishment as we work hard behind the scenes to upgrade and improve the space.

REOPENING DATE

We will be reopening in 2 weeks and we can't wait to welcome you all back!

Thank you for your patience and support. We're looking forward to meeting you all very soon.

The New Toft Village Store Team

Jenny and Justin would like to say goodbye to Toft

In 2014 we took over Toft shop and were welcomed into the village community. We have had an amazing time getting to meet so many of you; the local support and community have given us so much over the years, through the early years, COVID and challenging times. We also wish to acknowledge the wonderful young people that have worked with us - their interaction with the customers has made a huge impression on many.

The new owner of Toft shop is Sultan Hasan. We wish him all the best as he gets to know many of you and the wider local communities.

Cheers



On 13th April, Justin and Jenny Orange were presented with a card signed by many Toft residents thanking them for their years of service at Toft shop and their support of the village community.

Toft 1895

PART 2

Continuing our serialisation of May Creek's handwritten memoir, she now brings us to the Methodist chapel and The Mount, where a sawmill stood.

Then the Chapel with a history all its own. This was a square building, entrance in the centre between the pulpit and the pews, a building looking more like a local police station, our visitors would say. The pews were raised by five shallow steps about four inches high the depth of each pew; they were certainly a stumbling block to strangers. On the left, above the Chapel, a gate and a heap of rubble that had been a cottage. Next, the two cottages the same age as the Manor cottages, one occupied by the Dickersons. There was Sarah the mother, Lewis, Mrs Zaphoroni and her two brothers, who spent their time gathering mushrooms, watercress and blackberries which they sold. Next door, Frank Sparks and his wife Matilda (nee Rogers) and a family of four: Mabel, Sid, Joe and Arly. Frank was a clever man with his hands and in charge of Mr Warboys' sawmill for years. Then we get to the Mount, a tiny one up one down cottage tucked in occupied by a Mrs Braysher. This was later annexed to Mr Warboys' house which, when Mr. James Warboys lived there with a housekeeper, it was just a small place overlooking his work sheds where he employed carpenters and joiners, painters, wheelwrights and others. They kept horses for their timber carriages and timber Jill – a one-horse contraption. These sawmills were very much an industry at Toft in the early 1900 years. I just remember Mr Warboys' two housekeepers: Agnes Parish (later Mrs Joan Tebbit) and Mrs Mills, a widow always dressed in deep mourning with much crepe and a widow's cap. When Mr Joe Warboys moved to the Mount, the wing was added to the house about 1909.



COMBERTON HERITAGE SOCIETY



The meeting this month is on Tuesday May 26th at 8pm in Comberton Village Hall
Chris Sullivan will be giving a talk on



THE STORY OF R.A.F. GRANSDEN LODGE

Chris Sullivan was born in London and now lives near Cambridge. He has a long-standing interest in aviation and its history. Chris is a private pilot and former gliding instructor and for more than 20 years has flown from Gransden Lodge.

MUSIC CAFÉ



at St Mary's Church Comberton,
Church Lane, CB23 7ED

Saturday afternoons 2.30 - 4.00pm

April 25th - May 23rd

No June - July 25th

(4th Saturday of the month)

Anyone playing an instrument can email

musicalliz@btinternet.com

beforehand, to get onto the

programme. Children also welcome to

apply through their teacher or

parent/carer. Or just come and listen!

Refreshments from 2.30 pm
& music from local musicians
starting at 3 pm.

Entry free, but donations welcome.

Lifts offered to those without

transport musicalliz@btinternet.com

07889 271166

National Year of Reading

Did you know that 2026 is National Year of Reading? The aim is to encourage people of all ages to read for pleasure. Watch this space for more details.

Weekly activities

Knit, Sew and Natter 10.30am – 11.30am May 13th, June 10th and 24th. Newcomers welcome. Tea, coffee and biscuits.

Rhymetime 10.30am – 11.00am for children between 0 to 4 years of age. April 20th. Also, join the **First Steps Library Club**.

Lego Time with Duplo. Saturdays 10.30am. This is a free event.

May Bank Holiday closing dates:

Early May Bank Holiday Monday 4th May
Spring May Holiday Monday 25th May

Opening hours (excluding bank holidays, etc.)

Monday	10am – 5pm
Tuesday	10am – 1pm
Wednesday	10am – 1pm and 2.30pm – 5.30pm
Friday	2.30pm – 5.30pm
Saturday	10am – 1pm

The
SCHOOLROOM
Community Café

Wednesdays 10.30am - 1.30pm

The Café continues to be busy every Wednesday and we are especially pleased to see visitors at both ends of the age spectrum - babies and toddlers enjoying singing rhymes from 10.30 to 11am and giving mums and dads (or grandparents!) a chance to chat over a coffee and cake afterwards and our elderly neighbours from Home Meadow, who often like to join in the singing too, whilst enjoying a change of scenery and homemade cakes and sausage rolls.

We held a very well-supported lunch for all our volunteers on April 19th, followed by the Café's AGM. Even if you weren't able to make the AGM, we welcome your feedback and suggestions at any time.

**2026 TOFT
BIG BREAKFAST**

is just a couple of weeks away

Sunday, May 17th, 2026

from 9.00am to noon

Toft People's Hall



We look forward to seeing you tucking into your big breakfast and enjoying the buzz.

We are still looking for home bakers to make bread, cakes and pastries
Email: linda.hollow@btconnect.com

For all the people of Toft with all profits being given to Farm Africa and Fairtrade.

Enjoy a delicious breakfast – pay what you can!





TOFT VILLAGE KITCHEN

Personal Chef • Catering

EXCEPTIONAL FOOD. UNFORGETTABLE EVENTS.

From intimate gatherings to show-stopping celebrations,
we bring restaurant-quality dining directly to you.

GLOBAL FLAVOURS, EXPERTLY CRAFTED:

British • Indian • Mediterranean • American • Pan Asian
and beyond

Beautifully tailored menus to suit your taste, occasion,
and guests.

WE CATER FOR EVERY OCCASION:

- Private chef dining at home
- Weddings, parties & special celebrations
- Corporate & private events
- Thoughtful catering for gatherings & celebrations of life

The perfect bite, every bite.

Professional, flexible and completely stress free,
we handle everything so you can focus
on your guests.

MAKE YOUR NEXT EVENT TRULY MEMORABLE.



07584 584 920



toftvillagekitchen@gmail.com

Based locally, covering surrounding areas

ENQUIRE NOW TO START PLANNING YOUR EVENT.



Very tidy, polite and I felt very comfortable with having them around my home. Over the moon with the work they have done.

MRS WAYMAN



Ten out of ten for this business. This team is honest and hardworking. They go the extra mile to give their customers just what they want.

CALI



The best tradesmen we've ever dealt with!

JO



FENCING WITHOUT BOUNDARIES

FENCING | CLEARANCE | LANDSCAPING

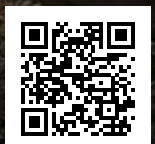
Making your outdoor spaces beautiful – and secure



RATED 5/5

0800 206 1585

leafandlawn.co.uk





HARDWICK

169 St Neots Road, Hardwick
Cambridgeshire, CB23 7QJ
Tel: 01954 210250

Monday - Friday - 8.30 to 10.30am - 4.30 to 7.00pm

Saturday - 9.00am to 11.00am

Sunday - 10.00am to 11.00am

PAPWORTH

Unit 1, Pendrill Court, Ermine Street North
Papworth Everard, Cambridgeshire, CB23 3UY
Tel: 01480 831615

Monday, Wednesday, Friday - 11.30am to 1.30pm

Saturday - 12.00pm to 1.30pm

Consultations by Appointment Only

www.ashcroftvet.co.uk

Andrina B

the footcare specialist

Providing expert treatment in all aspects of foot healthcare in the comfort of your own home

**Nail Cut • Callus • Athlete's Foot
Hard Skin • Corn Removal
Fungal Infections • Plantar Faciitis
In-Growing Toe Nail • Orthotics
Leg and Foot Massage**

To book your appointment call Andrina on

07966 571 686

or email: andrinab@foot-care.co.uk

www.foot-care.co.uk

Andrina Baldock, Foot Health Practitioner, SAC Dip. FHPP FHPT
Register for Foot Health Practitioners Member

PEASGOOD & SKEATES

THE FAMILY FUNERAL SERVICE

*All types of funeral carried out
with the highest standard of service and care*

617 Newmarket Rd
CAMBRIDGE
01223 415255

164 Histon Rd
CAMBRIDGE
01223 791060



**Also at Sawston, Duxford, Haverhill
and Saffron Walden**

Ask us about Funeral pre-planning and "My Funeral Wishes"

www.peasgoodandskeates.co.uk



Little Hands Nursery School - Bourn Short Street, Bourn



A private Nursery School specialising in quality preschool care and education for the under fives |
High staff to child ratio, using an individual child centred curriculum
Flexible booking system for the 08.30am - 4.30pm nursery day
Optional holiday clubs available

We accept nursery funding giving 15 hours per week of funded nursery sessions
for all 3 and 4 year olds and eligible 2 year olds plus 30 funding for eligible families

For further details contact:
Pam Marsden: nursery manager 01954 710656
E-mail: lh.bourn@gmail.com

Little Hands is also at Linton, Melbourn and Newton, visit the website at
www.littlehands.co.uk

Probably the best sun hats in Toft...

We lived in Australia.
It's rather sunny there.
They have excellent sun hats.

We returned to Blighty.
It's sometimes sunny here.
We missed the excellent Antipodean sun hats.

So, we became the UK's only supplier of
Australia's Toshi sun hats...
Proper wide brims, UPF50+, chin straps,
unique designs, breathable cotton, JOY-filled
hats for children and adults.

We can deliver for free in Toft, just use code
BLUEBELL. Or if you'd like to try some hats on
first, just drop me a message on the website.

Visit www.sunbeamhats.co.uk
~ Happy in the sun ~

Steamroller Ironing Services



Free pick-up and delivery
24/48 hr turnaround
Price: 1lb = £1.75. Minimum = £15
Established 2002
07742319631
01954 210672

Rothwell's Carpet Cleaning

Carpet Cleaning & Stone Floors, Upholstery, Rugs

A few points that make us stand out,

Rothwell's has been in business since 1993
We're an honest local family firm.
Our large truck mounted machines mean more
cleaning & drying power for excellent results.
Members of both the NCCA and TACCA.
We will move the furniture.
100% satisfaction or it's FREE.



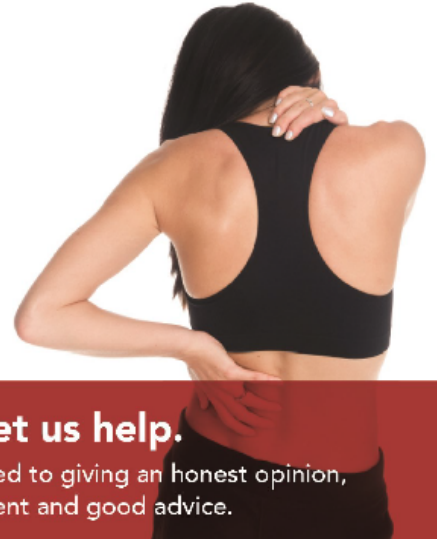
*Call Oliver and Max Campbell
for expert help today.*

01223 832 928 www.Rothwells.biz



CAMBOURNE OSTEOPATHS

Back Pain
Neck Pain
Joint Pain
Headaches
Muscle Spasm
Sports Injuries
Arthritis
& much more



In Pain? Let us help.

We are committed to giving an honest opinion,
effective treatment and good advice.

Appointments Mon-Fri
01223 598558

Regus, 1010 Cambourne
Business Park, CB23 6DP

Book online: www.cambourneosteopaths.com
Email: practice@cambourneosteopaths.com

CHIMNEY SWEEP

J.L. Wight

Guild of Master Sweeps

**Advice given/
Problems solved**



Certificates issued



01954 253315

www.camsweep.co.uk

9 Cow Lane, Rampton, Cambridge CB24 8QG

PHYSIOTHERAPY AT HOME

Enjoy the benefits of a
friendly, supportive
and knowledgeable
physiotherapy service,
tailored to your needs,
from the comfort of
your own home.



www.cambridgevillagesphysiotherapy.co.uk

naomi@cambridgevillagesphysiotherapy.co.uk

07356 038 034



**Cambridge Villages
Physiotherapy**

BIN COLLECTIONS FOR MAY

Black Bin: 14th, 28th

Blue Bin: 7th, 21st

Green Bin: 7th, 21st

NOTICE TO ADVERTISERS

Advertisements are published quarterly. Copy for inclusion in the next available edition of the Calendar must reach us by 17th July at the very latest. Advertisements will NOT be published unless full payment has been received in advance. Please note: Quarter-page adverts MUST be Portrait-style, half-page adverts MUST be Landscape style. In the first instance, advertisers should contact Jean Verney at: calendaradstoft@gmail.com to discuss their requirements.

USEFUL PHONE NUMBERS

Alcoholics Anonymous: 0845 769 7555
Anglian Water (for sewage): 08457 145 145
(Emergency number for burst water pipes: 01223 706050)
Ashcroft Veterinary Surgery: 01954 210250
Bourn GPs' Surgery: 01954 719313
Cambridge AIDS help-line: (01223) 508805
Cambs County Council: 0345 045 5200
Cambridge Dial a Ride 01223 506335
Cambridge Water: 01223 706050
Care Network Cambridgeshire 01954 211919.
Citizens Advice Bureau: 0844 848 7979
Comberton GPs' Surgery: 01223 262500
Comberton Village College: 01223 262503
Community Warden (Age UK CAP) 07812 495997
County Councillor Michael Atkins 07968 264637
CVC Community Education: 01223 264721
District Councillor: Lina Nieto 07506 420655
Household Waste/Pest Control: 0345 045 0063
Lifespan Health Care, Family and Child Team: 01223 264460
MP pippa.heydings.mp@parliament.uk
Meridian Primary School: 01223 262423
Police: 101 (Emergencies: 999)
(Local Beat Officer is PCSO Sam Kennedy)
Road/Pothole Reporting: 0345 045 5212
Street Lighting: 0800 7838 247
Street Cleaning: 03450 450 063
South Cambs District Council: 01954 713 000
South Cambs Fire and Rescue: 01480 444 500
Toft Car Scheme: 07790 171710
Trading Standards: 0345 0455206
UK Power Networks (Emergencies): 0800 31 63 105

SOME USEFUL WEBSITE ADDRESSES

Cambridgeshire Constabulary:
<https://www.cambs.police.uk/contact/af/contact-us>
Cambridge City Food Bank:
<https://cambridgecity.foodbank.org.uk/>
South Cambridgeshire District Council:
<http://www.scambs.gov.uk>
Toft Parish Council: <https://tpc.toft.org.uk>
Toft Shop: <http://www.toftshop.co.uk>
Toft Village Website: <http://www.toft.org.uk>

A call for contributions

We hope you're enjoying the Toft Village Calendar and all the usual content. One of recent new features we have included is 'What I'm Reading': let people know in just a few sentences (doesn't have to be more than 50-100 words) what you're reading and why you're enjoying it – or disliking it. And if you'd like to write a guest editorial, we'll consider contributions of 300-500 words on any topic. Naturally, we reserve the right to not publish any offensive, politically-biased or inappropriate material; otherwise, feel free to offer a view of the world that would interest Calendar readers. And if you have any other ideas for the Calendar, let us know. Send all contributions and ideas to calendareditor@toft.org.uk.

CONTRIBUTIONS TO THE CALENDAR

The Calendar is always pleased to receive contributions from readers, advertisers and fund raisers. We reserve the right to edit, amend, abridge or otherwise butcher any submissions to accord with technical or editorial requirements, or sometimes just on a whim. We do not normally accept anonymous contributions or those using pen names.

Contributors are asked to note that all text formatting is removed from items on receipt. Please send your written contributions as Word documents, if possible, or just plain text.

Please avoid sending PDFs unless you have no other option. Graphics (if essential) are best submitted as PNG or JPEG files.

Please ALWAYS send your contributions to calendareditor@toft.org.uk - never to an individual member of the editorial and design team.

Many thanks.

And, finally...Please remember that contributions for the next issue of the Calendar must reach the Editor by 18th May.

Many thanks to all who contributed to this edition.
Email: calendareditor@toft.org.uk
Post: The Gig House, The Old Horse Yard, Comberton Road, Toft CB23 2RY